



OVERVIEW

Great location for a Main Street Office in the Rhyne Financial Building. Historic neighborhood on a quaint street setting. Features plenty of parking for this two story well main-tained building.



Office Space For Lease: \$ 450.00 Per Mo. Includes Utilities - 375 SF

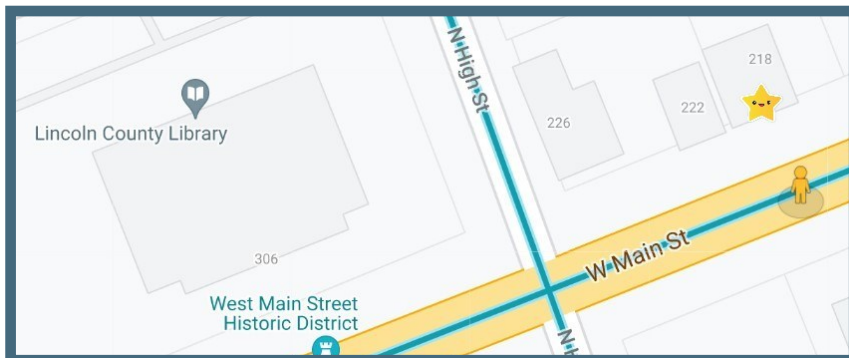
UTILITIES:

Water/Sewer:
Cable/Internet:
Electrical:

City of Lincolnton
Charter or AT&T
City of Lincolnton

HIGHLIGHTS:

- **A Two Office Suite Available**
- **Shared Hallway and Shared Bath-rooms for a total of four suites on the lower level.**
- **West Main Street frontage.**
- **Plenty of paved Parking with entrance and exit on West Main Street and Sycamore Street.**
- **Ground Level easy entry with no stairs on lower level with direct entry into separate suite doors.**
- **HVAC System**
- **Utilities and Alarm System provided.**
- **Provide own internet/phone services.**



Contact Information:

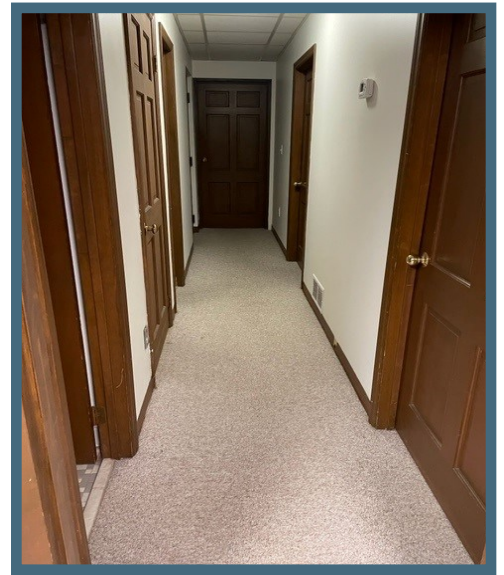
Rhonda Hunter, Entrepreneur Specialist

Phone: (704) 732-1511 Ext. 6

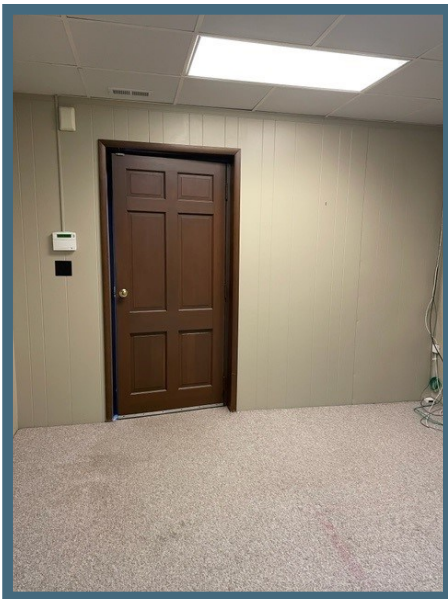
Email: rhonda@lincolneda.org



LOWER LEVEL ENTRANCES TO SUITES



SHARED HALLWAY AND BATHROOMS



SUITE ENTRANCE TO FIRST OFFICE OR RECEPTION AREA. ALARM SYSTEM BESIDE DOOR.



SMALL BUSINESS & ENTREPRENEURS
LINCOLN ECONOMIC DEVELOPMENT ASSOCIATION

VIEW ENTERING FRONT DOOR TO FRONT OFFICE OR RECEPTION AREA.



REAR OFFICE SPACE INCLUDES BOOKSHELF AND PRIVATE CLOSETS PLUS ENTRANCE DOOR TO THE SHARED HALLWAY

VIEW OF REAR OFFICE FACING THE FRONT ENTRANCE DOOR THAT HAS A GLASS EXTERIOR DOOR IN FRONT OF THE WOODEN DOOR THAT LET'S NATURAL LIGHT IN.

