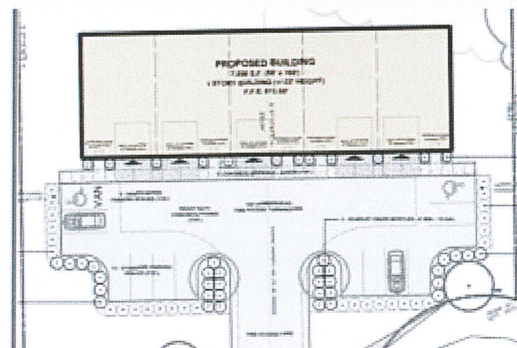
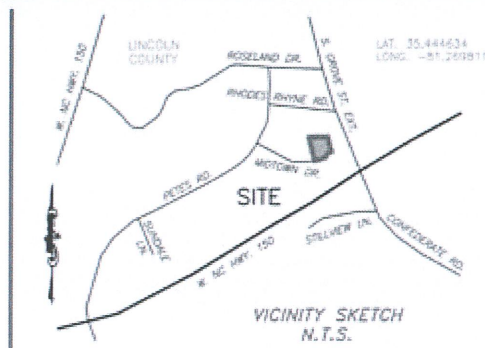


**COMING SOON 2026!**



## **INDUSTRIAL SPACE ON MIDTOWN DRIVE!**

**Position Your Business for Growth in a Modern Industrial Space!**  
This upcoming high-performance industrial facility is designed to meet the evolving needs of today's business operations. Featuring flexible warehouse space with integrated professional office suites, this property offers the infrastructure, accessibility, and efficiency your business needs to thrive.

### **Additional Information:**

- **PARKING AVAILABILITY**
- **LEASE TERMS AT A MINIMUM OF 12 MONTHS**
- **3 PHASE POWER**



**MIDTOWN DRIVE,  
LINCOLNTON, NC  
28092**

***PIPER@CEBOFFICE.COM***

***980.890.3265***